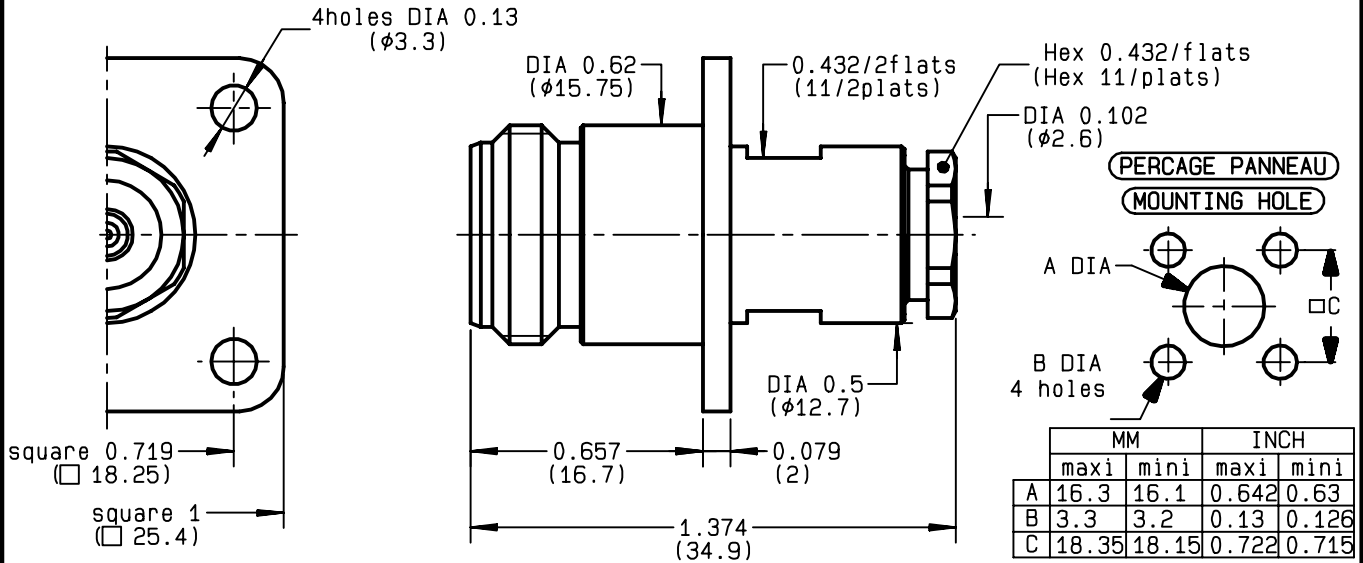


**STRAIGHT SQUARE FLANGE JACK
CLAMP TYPE - CABLE 2.2/50 D**

R161.251.200
SERIES N



NOMINAL IMPEDANCE	50 Ω
FREQUENCY RANGE	0-11 GHz
TEMPERATURE RATING	-55/+155 °C
V.S.W.R	1.40 + x F(GHz)Maxi
RF INSERTION LOSS	0.048 √F(GHz) dB Maxi
VOLTAGE RATING	250 Veff Maxi
DIELECTRIC WITHSTANDING VOLTAGE	750 Veff Mini
INSULATION RESISTANCE	5000 MΩMini
HERMETIC SEAL	NA Atm.cm ³ /s
LEAKAGE (pressurized only)	NA
MECHANICAL DURABILITY	500 Cycles
WEIGHT	40.1 gr
SPECIFICATION	

CABLES : **TS 2619**

OTHERS CHARACTERISTICS

CABLE RETENTION	120	N Mini
CENTER CONTACT RETENTION		
Axial force - mating end	27	N Mini
Axial force - opposite end	27	N Mini
Torque	NA	cm.N Mini
RECOMMENDED TORQUES		
Mating	NA	cm.N
Panel nut	NA	cm.N
Clamp nut	450	cm.N

CONNECTOR PARTS	MATERIALS	FINISH	(all values are given in micrometers)
BODY	BRASS	BBR 2	
OUTER CONTACT	BRASS	BBR 2	
CENTER CONTACT	BERYLLIUM COPPER	GOLD 0.5 OVER NICKEL 2	
INSULATOR	PTFE	-	
GASKET		-	
OTHERS PIECES	BRASS	BBR 2	

ISSUE	CREATION DATE	FILE PART-NUMBER
9823C00	15/11/1993	92-0019-103



RADIALL®

Y. PERRIN

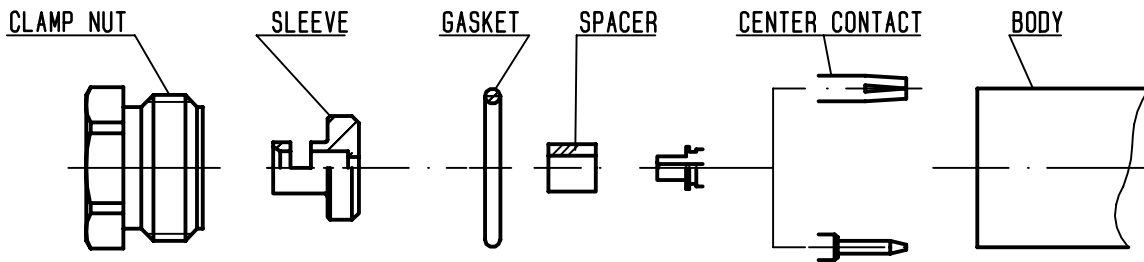
The information given here is subject to change without notice.
Design changes may be in order to improve the product .

Connect to the future



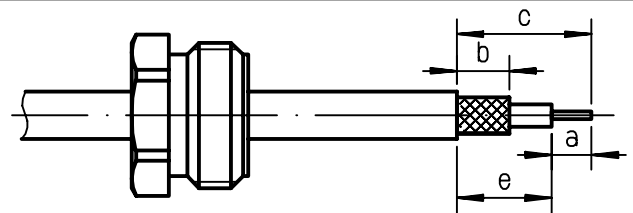
R161.251.200

ISSUE **9823C00** SERIES **N**



①

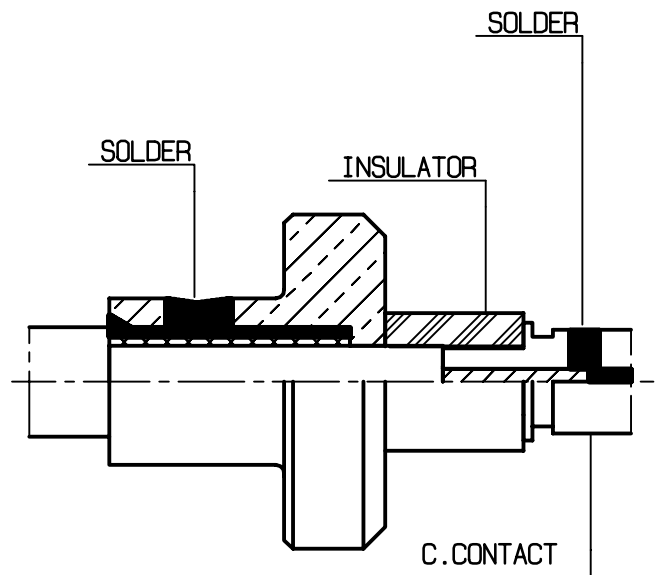
Slide clamp nut onto cable .
Strip the cable .
-



Stripping	a	b	c	d	e
inch	0.157	0.217	0.449	0	0.291
mm	4	5.5	11.4		7.4

②

Slide the sleeve between the braid .
Solder the braid into the sleeve .
Slide the spacer .
-
-



③

Solder the cable inner conductor into center contact .
Slide the back nut over the clamp assembly .
-

④

Mount the gasket into the connector .
Screw sub-assembly into the connector body .
(recommended coupling torque 39.825 in.lb)
-

